



Made in Maine

Family-Owned Since 1927

Genest Lifetime Warranty



36 Wilson Street • Sanford, Maine
544 Elm Street • Biddeford, Maine
45 Enterprise Drive • Windham, Maine

Manufactured at:
36 Wilson Street
Sanford, ME 04073



GENESTCONCRETE.COM

YouTube Instagram Facebook @GENESTCONCRETE



GENEST
PAVING STONES & WALLS

20
24



A Smaller Footprint

G-Mix® Low Carbon Concrete

Genest is proud to be the first in the industry to develop a low-carbon formula for paving and wall stone. G-mix® uses at least 5% recycled content and half of the cement traditionally used to produce concrete blocks and paving stones while exceeding ASTM specification requirements.

G-mix was developed using proven methods of CO₂ reduction with quantifiable, verifiable results. The cradle-to-gate environmental impact of G-mix® has been third-party tested and ASTM-verified, and the Global Warming Potential (GWP) of our products is among the lowest in the industry.

The processing of cement, the primary binding agent in concrete, accounts for 75% of total carbon emissions by traditionally manufactured concrete. We offset the use of cement with slag, a byproduct from the steel industry, to reduce our carbon footprint. The materials we use to supplement cement have the added benefit of increasing strength and efficiency, improving color, and decreasing efflorescence. The use of slag in our concrete formula results in greater cement reduction than typical CO₂ curing methods without compromising strength and durability.

To further reduce our environmental impact, we have the ability to replace over 50% of the aggregate in our concrete masonry units (CMUs), including our Comfort Block systems (pg. 57), with foamed recycled glass. This reduces waste and the extraction of raw materials while improving thermal efficiency and producing a lighter weight CMU that still exceeds strength requirements, reducing carbon emissions associated with transport.

Our full product line is manufactured using G-mix® so you can be confident in selecting a low-carbon option for your project.

G-MIX®

LOW CARBON CONCRETE

- ✓ **50% Less Cement**
- ✓ **Up to 55% Recycled Materials**
- ✓ **Exceeds Strength Requirements**
- ✓ **Third-Party Tested**
- ✓ **Locally Sourced Aggregate**
- ✓ **Low Carbon Footprint**

Available for All Mixes:

G-mix® 5% recycled content

Additional Formulas Available for Comfort Block:

G-mix®25 25% recycled content

G-mix®45 45% recycled content

G-mix®55 55% recycled content

Genest is committed to practicing sustainable manufacturing. We have made it our mission to reduce the environmental impact of concrete construction through innovative engineering, the use of reclaimed and recycled materials as well as locally sourced aggregate, and monitoring of fossil fuels used during the manufacturing process. Our products are subject to ongoing, continual improvement as we continually challenge our materials and processes, pushing the boundaries of what it means to make concrete blocks and paving stones.

Available with up to 50% foamed recycled glass aggregate



Introducing Summer Blend & Autumn Blend

We are expanding and enriching our brown and tan color palette in our 2024 collection with the introduction of Summer Blend and Autumn Blend, inspired by the natural hues of the seasons. Meticulously crafted to replace our popular Meadow Blend for greater design flexibility, Summer and Autumn round out our color options with a broader range of earth tones to complement any home and blend seamlessly with their surroundings. Both color blends were designed to imitate the variegated appearance of natural stone and pair beautifully with all Genest walls, fire pits, and paving stones.



SEBAGO STONE IN SUMMER BLEND

Summer Blend

A versatile tan and natural color blend that is similar to the now retired Meadow Blend, Summer Blend offers a sleek and modern look while blending smoothly with the surrounding landscape.

Autumn Blend

A rich blend of mahogany brown with a subtle purplish tint, Autumn Blend has a sophisticated and distinctive appearance that adds a touch of elegance to any outdoor space.



KATAHDIN STONE IN AUTUMN BLEND

Table of Contents

Paving Stones

	Katahdin Stone [®]	11
	Grand Katahdin Stone [™]	13
	Circle Pack	15
Special Order	Tidewater Stone [®]	17
	Eastern Bay Stone [™]	19
Special Order	Tradeport Stone [™]	21
	Camden Bay "HI Pack"	23
	Harborline Brick [®]	25
	Hollandstone	27
Special Order	Stormwater Brick [®]	29
	Sebago Stone	31

Large Format Stones

	Windham Ridge Flagging [™]	35
	Blackwater River Stone [™]	37
	Jordan Bay Flagging	39
	Lexington Park Tile	41
Special Order	Portland Plaza Stone	43
NEW	Chamberlain Stone	45
	Duragreen [®]	47

Outdoor Living

	Outdoor Fire Pits	51
	Borders & Accents	53



Comfort Block[®] Wall Systems

CB-12, CB-8, CB-6, and CB-4	57
------------------------------------	----

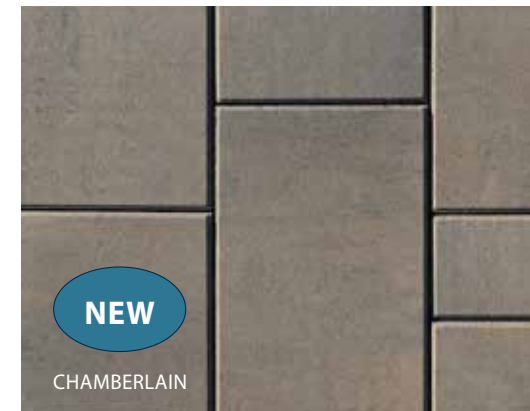
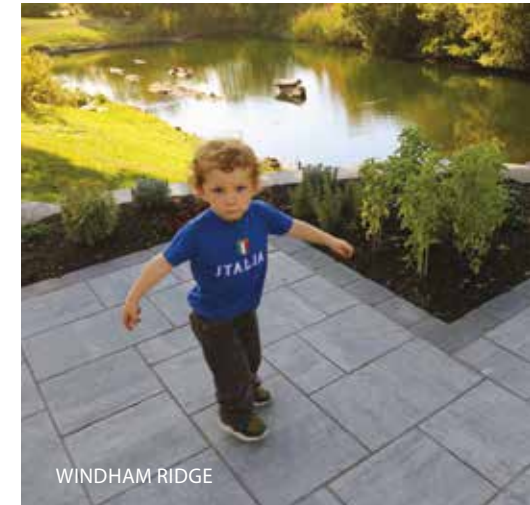
Landscape Wall Systems

Highland Stone [®] Retaining Wall	63
Highland Stone [®] Freestanding Wall	65
Diamond [®] Retaining Wall	67
Diamond Pro [®] Retaining Wall	68
Genest Garden Wall Stone [®]	69
Single-Split Corner Blocks	71
Retaining Wall Accessory Products	73

Laying Styles & Warranty

Paving Stones Laying Styles	74
Circle Kit Installation Instructions	75
Transferable Lifetime Warranty	76
Engineering of a Genest Paving Stone	77

Colors in photos may vary from actual product. Please ask your dealer or Genest representative for an actual sample.



Paving Stones



SEBAGO STONE AND HIGHLAND RETAINING WALL IN GRANITE BLEND

Katahdin Stone®

Natural Stone Texture

Cobblestone Appearance

Katahdin Stone® is a versatile 3-piece system with a natural stone texture molded from real Maine stone. Irregular edges and a dimpled texture evoke the timeless charm of colonial cobblestone. Use it in combination with Grand Katahdin Stone® or the Circle Pack for additional laying styles.

- Driveway**
- Walkway**
- Patio**



PRODUCT INFORMATION

Pallet wt	3,239 lbs
Sq ft per pallet	117.81 sq ft
Layers per pallet	11
Sq ft per layer	10.71 sq ft

3-Piece System
All three sizes are together on one pallet.



UNIT DIMENSIONS



Height	2 3/8" (60 mm)
Width	4 3/4" (120 mm)
Length	4 3/4" (120 mm)
Units/Pallet	231
Units/Layer	21
Units/Sq ft	6.4
Sq ft/Unit	.15



Height	2 3/8" (60 mm)
Width	4 3/4" (120 mm)
Length	7 1/8" (180 mm)
Units/Pallet	154
Units/Layer	14
Units/Sq ft	4.3
Sq ft/Unit	.23



Height	2 3/8" (60 mm)
Width	4 3/4" (120 mm)
Length	9 1/2" (240 mm)
Units/Pallet	154
Units/Layer	14
Units/Sq ft	3.2
Sq ft/Unit	.31

COLOR OPTIONS



Granite Blend



Summer Blend



Autumn Blend



Grand Katahdin Stone™

Natural Stone Texture

Cobblestone Appearance

Molded from real Maine stone, Grand Katahdin Stone™ offers a larger cobblestone look with a dimpled texture and irregular edges. These larger stone sizes offer additional design possibilities for patios and walkways. Grand Katahdin also can be used in combination with Katahdin Stone® for additional laying style options.

- Walkway
- Patio



PRODUCT INFORMATION

Pallet wt	3,422 lbs
Sq ft per pallet	124 sq ft
Layers per pallet	10
Sq ft per layer	12.4 sq ft

3-Piece System
All three sizes are together on one pallet.

Grand Katahdin Stone™ is not intended for vehicular traffic.

UNIT DIMENSIONS



Height	2 3/8" (60 mm)
Width	9 1/2" (240 mm)
Length	4 3/4" (120 mm)
Units/Pallet	60
Units/Layer	6
Units/Sq ft	3.2
Sq ft/Unit	.31



Height	2 3/8" (60 mm)
Width	9 1/2" (240 mm)
Length	9 1/2" (240 mm)
Units/Pallet	80
Units/Layer	8
Units/Sq ft	1.6
Sq ft/Unit	.62



Height	2 3/8" (60 mm)
Width	9 1/2" (240 mm)
Length	14 1/4" (360 mm)
Units/Pallet	60
Units/Layer	6
Units/Sq ft	1.06
Sq ft/Unit	.94

COLOR OPTIONS



Granite Blend



Summer Blend



Autumn Blend



Circle Pack

Accents & Patterns Enhance Design

Natural Stone Texture

The Circle Pack has the same natural stone texture as Katahdin Stone, which can be used to expand the outer diameter of the circle if needed. One pallet will produce two 7' circles or one 9' 10" circle (4 layers per 7' circle).

Please allow some spacing between stones when installing. Spare stones are included in each pallet.

- Driveway**
- Walkway**
- Patio**



PRODUCT INFORMATION

Pallet wt	2,141 lbs
Sq ft per pallet	82.5 sq ft
Layers per pallet	8
Sq ft per layer	10.31 sq ft

5-Piece System
All five sizes are together on one pallet.



***See Diagram on pg. 75 for installation tips**

UNIT DIMENSIONS



Center Piece

Height	2 3/8" (60 mm)
Units/Pallet	8
Units/Layer	1



Large Wedge

Height	2 3/8" (60 mm)
Units/Pallet	16
Units/Layer	2



Small Wedge

Height	2 3/8" (60 mm)
Units/Pallet	240
Units/Layer	30



Square

Height	2 3/8" (60 mm)
Units/Pallet	104
Units/Layer	13



Rectangle

Height	2 3/8" (60 mm)
Units/Pallet	80
Units/Layer	10

COLOR OPTIONS



Granite Blend



Summer Blend





Tidewater Stone®

Storm Water Management

Classic Look

Tidewater Stone®'s unique design makes it suitable for traditional paver installations and as a permeable paver for storm water management. Because of this, it is a favorite for driveway installations. The eye-catching 4-piece sizing makes it a great choice for any outdoor living space.

- Driveway**
- Walkway**
- Patio**



Paving Stones
Tidewater Stone®

PRODUCT INFORMATION

Special Order

Pallet wt	3,113 lbs
Sq ft per pallet	86.40 sq ft
Layers per pallet	9
Sq ft per layer	9.6 sq ft

4-Piece System
All four sizes are together on one pallet.



UNIT DIMENSIONS



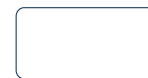
Height	3 1/8" (80 mm)
Width	5 1/4" (134 mm)
Length	3 1/2" (89 mm)
Units/Pallet	90
Units/Layer	10
Units/Sq ft	5.76
Sq ft/Unit	.18



Height	3 1/8" (80 mm)
Width	5 1/4" (134 mm)
Length	5 1/4" (134 mm)
Units/Pallet	108
Units/Layer	12
Units/Sq ft	5.22
Sq ft/Unit	.19



Height	3 1/8" (80 mm)
Width	5 1/4" (134 mm)
Length	7" (179 mm)
Units/Pallet	90
Units/Layer	10
Units/Sq ft	3.92
Sq ft/Unit	.25



Height	3 1/8" (80 mm)
Width	5 1/4" (134 mm)
Length	10 1/2" (269 mm)
Units/Pallet	81
Units/Layer	9
Units/Sq ft	2.61
Sq ft/Unit	.38

SPECIAL ORDER ONLY

Contact us for details.
Minimum quantities apply.

COLOR OPTIONS



Granite Blend



Summer Blend



Becomes permeable when installed according to ICPI specifications for permeable pavements with open-graded base and sub-base for infiltration and storage.



Eastern Bay Stone™

Storm Water Management

Perfect for Borders

Eastern Bay Stone™ is a versatile single-sized paving stone designed for conventional paver installations as well as permeable paving systems for storm water management.

Eastern Bay Stone™ has a natural stone texture for a classic look and is beautiful installed alone or as a border.

- Driveway**
- Walkway**
- Patio**
- Borders**



Paving Stones
Eastern Bay Stone™



PRODUCT INFORMATION

Pallet wt	3,273 lbs
Sq ft per pallet	128 sq ft
Layers per pallet	10
Sq ft per layer	12.8 sq ft

UNIT DIMENSIONS



Height	2 3/8" (60 mm)
Width	4 3/4" (120 mm)
Length	9 1/2" (240 mm)
Units/Pallet	400
Units/Layer	40
Units/Sq ft	3.2
Sq ft/Unit	.31



Becomes permeable when installed according to ICPI specifications for permeable pavements with open-graded base and sub-base for infiltration and storage.

COLOR OPTIONS



Charcoal



Summer Blend*



Granite Blend*

*Call for Availability

Tradeport Stone™

Smooth Texture

Clean Lines

Tradeport Stone™ offers a larger size stone with a classic look. Smooth texture and clean lines add appeal and distinction to any landscape project.

Also available as special order in 80mm height. This thicker paving stone is ideal for residential driveways and commercial applications.

- Driveway** (80mm)
- Walkway**
- Patio**



Paving Stones
Tradeport Stone™

PRODUCT INFORMATION

Pallet wt	3,259 lbs
Sq ft per pallet	114.4 sq ft
Layers per pallet	11
Sq ft per layer	10.4 sq ft

3-Piece System
All three sizes are together on one pallet.

Tradeport Stone™ in 60 mm is not intended for vehicular traffic.

Special order 80mm Tradeport Stone™ can be used in light vehicular applications such as a residential driveway.



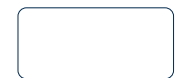
UNIT DIMENSIONS



Height	2 3/8" (60 mm)
Width	7 7/8" (200 mm)
Length	7 7/8" (200 mm)
Units/Pallet	44
Units/Layer	4
Units/Sq ft	2.38
Sq ft/Unit	.42



Height	2 3/8" (60 mm)
Width	7 7/8" (200 mm)
Length	11 13/16" (300 mm)
Units/Pallet	88
Units/Layer	8
Units/Sq ft	1.56
Sq ft/Unit	.64



Height	2 3/8" (60 mm)
Width	7 7/8" (200 mm)
Length	15 3/4" (400 mm)
Units/Pallet	44
Units/Layer	4
Units/Sq ft	1.18
Sq ft/Unit	.85

COLOR OPTIONS



Granite Blend



Summer Blend

Camden Bay "HI Pack" Stone

Natural Cobblestone Appearance

Two-Piece System

Camden Bay Stone offers the appearance of natural cobblestone with a smooth surface. Now packaged as a two-piece system, the "HI Pack" contains the ratio of rectangular and square units that most effectively accommodates an H or I pattern, the most popular laying style for Camden Bay Stone.

- Driveway**
- Walkway**
- Patio**
- Borders**



PRODUCT INFORMATION

Pallet wt.	3,229 lbs
Sq ft per pallet	115.5 sq ft
Layers per pallet	11
Sq ft per layer	10.5 sq ft

2-Piece System
Both sizes are together on one pallet.



UNIT DIMENSIONS



Height	2 3/8" (60mm)
Width	6" (152 mm)
Length	6" (152 mm)
Units/Pallet	132
Units/Layer	12
Units/Sq ft	4
Sq ft/Unit	.25



Height	2 3/8" (60 mm)
Width	6" (152 mm)
Length	9" (229 mm)
Units/Pallet	220
Units/Layer	20
Units/Sq ft	2.67
Sq ft/Unit	.375

COLOR OPTIONS



Granite Blend



Summer Blend



Charcoal

Harborline Brick®

Subtle Wire-Cut Characteristics

Old World Charm

Harborline Brick® has all the subtle characteristics and color combinations of an old handmade brick. Perfect for walkways, patios, and driveways, this paver will add a touch of class and charm to any New England home.

- ☑ **Driveway**
- ☑ **Walkway**
- ☑ **Patio**
- ☑ **Borders**



Paving Stones
Harborline Brick®



PRODUCT INFORMATION

Pallet wt	3,460 lbs
Sq ft per pallet	120 sq ft
Layers per pallet	10
Sq ft per layer	12 sq ft

UNIT DIMENSIONS

Height	2 3/8" (60 mm)
Width	4" (100 mm)
Length	8" (200 mm)
Units/Pallet	540
Units/Layer	54
Units/Sq ft	4.5
Sq ft/Unit	.22

COLOR OPTIONS



Cumberland Blend

Hollandstone

Traditional Look of Clay Brick

Durable

Hollandstone paving stones beautifully combine the traditional look of clay brick with the durability of concrete. Available in multiple color blends, Hollandstone pavers offer a wealth of design possibilities for driveways, walkways, and patios.

- Driveway**
- Walkway**
- Patio**
- Borders**



60 mm

Pallet wt	3,460 lbs
Sq ft per pallet	120 sq ft
Layers per pallet	10
Sq ft per layer	12 sq ft



Height	2 3/8" (60 mm)	Units/Layer	54
Width	4" (100 mm)	Units/Sq ft	4.5
Length	8" (200 mm)	Sq ft/Unit	.22
Units/Pallet	540		



80 mm *Special order only (13 cube minimum)*

Special Order

Pallet wt	3,130 lbs
Sq ft per pallet	85.36 sq ft
Layers per pallet	8
Sq ft per layer	10.67 sq ft



Height	3 1/8" (80 mm)	Units/Layer	48
Width	4" (100 mm)	Units/Sq ft	4.5
Length	8" (200 mm)	Sq ft/Unit	.22
Units/Pallet	384		

COLOR OPTIONS



Granite Blend



Charcoal



Cumberland Blend





Stormwater Brick®

Controls Water Runoff

Special Order Only

Stormwater Brick® used as part of a permeable pavement system is an excellent way to control water runoff. The aggregate base used in the system helps to filter and reduce pollutants. The ground water is recharged because the water is not running off the pavement. Stormwater Brick collects and properly handles storm water, providing a functional and attractive paving solution for commercial or residential applications.

- Driveway**
- Walkway**
- Patio**



Paving Stones
Stormwater Brick®



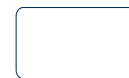
PRODUCT INFORMATION

Special Order

Pallet wt	2,711 lbs
Sq ft per pallet	78.24 sq ft
Layers per pallet	8
Sq ft per layer	9.78 sq ft

4" x 8" and 4" x 4" all on one pallet.
Each layer contains 6 half units.

UNIT DIMENSIONS



Height	3 1/8" (80 mm)
Width	4" (100 mm)
Length	8" (200 mm)
Units/Pallet	328
Units/Layer	41
Units/Sq ft	4.5
Sq ft/Unit	.22



Height	3 1/8" (80 mm)
Width	4" (100 mm)
Length	4" (100 mm)
Units/Pallet	48
Units/Layer	6
Units/Sq ft	9
Sq ft/Unit	.11

COLOR OPTIONS



Cumberland Blend



Granite Blend

* Other Special Order Colors
Also Available!

SPECIAL ORDER ONLY

Multiple colors available.
Contact us for details.
Minimum quantities apply.



Becomes permeable when installed according to ICPI specifications for permeable pavements with open-graded base and sub-base for infiltration and storage.





Sebago Stone

Versatile Sizing with Stone Texture

Perfect for Driveways

Sebago Stone™ features Genest's signature riven-faced texture resembling natural stone. This versatile 3-piece system is the perfect size for a driveway, patio, or walkway in a permeable or traditional installation.

Create even more interesting and dramatic patio styles by using Sebago Stone in combination with Jordan Bay Flagging.

- Driveway**
- Walkway**
- Patio**



Paving Stones
Sebago Stone

PRODUCT INFORMATION

Pallet wt	3,178 lbs
Sq ft per pallet	113.74 sq ft
Layers per pallet	11
Sq ft per layer	10.34 sq ft

3-Piece System
All three sizes are together on one pallet.



UNIT DIMENSIONS



Height	2 3/8" (60 mm)
Width	7 7/8" (200 mm)
Length	3 15/16" (100 mm)
Units/Pallet	121
Units/Layer	11
Units/Sq ft	4.6
Sq ft/Unit	.22



Height	2 3/8" (60 mm)
Width	7 7/8" (200 mm)
Length	7 7/8" (200 mm)
Units/Pallet	88
Units/Layer	8
Units/Sq ft	2.3
Sq ft/Unit	.43



Height	2 3/8" (60 mm)
Width	7 7/8" (200 mm)
Length	11 3/16" (300 mm)
Units/Pallet	77
Units/Layer	7
Units/Sq ft	1.5
Sq ft/Unit	.65

PLEASE NOTE: the packaging for this product has been modified, effective mid-season 2024. The number of units/layer and units/pallet will be changing to the above quantities. Until that change occurs, you may receive product with the previously published pallet configuration.

COLOR OPTIONS



Granite Blend



Summer Blend



Becomes permeable when installed according to ICPI specifications for permeable pavements with open-graded base and sub-base for infiltration and storage.

Large Format Stones



WINDHAM RIDGE IN GRANITE BLEND

Windham Ridge Flagging™

Simulates Natural Stone

Clean, Modern Look

Windham Ridge Flagging™ has a riven-faced texture to simulate natural stone without the inconsistent thickness. The large-scale pieces offer a clean, modern look for a patio, walkway, or poolscape.

- Walkway
- Patio



PRODUCT INFORMATION

Pallet wt	3,230 lbs
Sq ft per pallet	114.73 sq ft
Layers per pallet	11
Sq ft per layer	10.43 sq ft

3-Piece System
All three sizes are together on one pallet.

Roller Compactor Recommended

Windham Ridge Flagging™ is not intended for use in driveways or other vehicular applications.



UNIT DIMENSIONS



Height	2 3/8" (60 mm)
Width	14 3/16" (360 mm)
Length	7 1/16" (180 mm)
Units/Pallet	33
Units/Layer	3
Units/Sq ft	1.44
Sq ft/Unit	.69



Height	2 3/8" (60 mm)
Width	14 3/16" (360 mm)
Length	14 3/16" (360 mm)
Units/Pallet	33
Units/Layer	3
Units/Sq ft	.71
Sq ft/Unit	1.40



Height	2 3/8" (60 mm)
Width	14 3/16" (360 mm)
Length	21 1/4" (540 mm)
Units/Pallet	22
Units/Layer	2
Units/Sq ft	.48
Sq ft/Unit	2.09

COLOR OPTIONS



Granite Blend



Summer Blend



Autumn Blend





Blackwater River Stone™

Simulates Natural Stone

Clean, Modern Look

Blackwater River Stone™ is a single-sized stone with the same riven-faced texture as our popular Windham Ridge Flagging™. It is an excellent choice for borders and accents and can also be used alone in walkways and patios in either a running bond or herringbone laying style.

- Walkway**
- Patio**
- Border**



Paving Stones
Blackwater River Stone™



PRODUCT INFORMATION

Pallet wt	3,280 lbs
Sq ft per pallet	115.17 sq ft
Layers per pallet	11
Sq ft per layer	10.47 sq ft

Roller Compactor Recommended

Blackwater River Stone™ is not intended for use in driveways or other vehicular applications.

UNIT DIMENSIONS



Height	2 3/8" (60 mm)
Width	14 3/16" (360 mm)
Length	7 1/16" (180 mm)
Units/Pallet	165
Units/Layer	15
Units/Sq ft	1.44
Sq ft/Unit	.69

COLOR OPTIONS



Charcoal



Summer Blend*



Granite Blend*



Becomes permeable when installed according to ICPI specifications for permeable pavements with open-graded base and sub-base for infiltration and storage.

*Call for Availability

Jordan Bay Flagging

Riven-Faced Texture

Modern Design

Jordan Bay Flagging is perfect for an entryway, backyard patio, pool deck, or outdoor entertainment area. The single-size stones with a riven-faced texture create a stunning appearance on their own or can be mixed with our Sebago Stone for even more design possibilities.

- Walkway
- Patio



PRODUCT INFORMATION

Pallet wt	2,911 lbs
Sq ft per pallet	106.2 sq ft
Layers per pallet	10
Sq ft per layer	10.62 sq ft

Roller Compactor Recommended

Jordan Bay Flagging is not intended for use in driveways or other vehicular applications.



UNIT DIMENSIONS

Height	2 3/8" (60 mm)
Width	16" (406 mm)
Length	16" (406 mm)
Units/Pallet	60
Units/Layer	6
Units/Sq ft	.56
Sq ft/Unit	1.77

COLOR OPTIONS



Granite Blend

Summer Blend



Lexington Park Tile

**Smooth
Texture**

Clean Lines

Lexington Park Tile's larger size makes it a perfect choice for an entryway, backyard patio, pool deck, or outdoor entertainment area. With its smooth texture and clean lines, these slab stones create a stunning, contemporary appearance.

- Walkway**
- Patio**



Large Format Stones
Lexington Park Tile



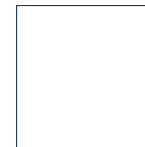
PRODUCT INFORMATION

Pallet wt	2,687 lbs
Sq ft per pallet	96 sq ft
Layers per pallet	6
Sq ft per layer	16 sq ft

Roller Compactor Recommended

Lexington Park Tile is not intended for use in driveways or other vehicular applications.

UNIT DIMENSIONS



Height	2 3/8" (60 mm)
Width	24" (600 mm)
Length	24" (600 mm)
Units/Pallet	24
Units/Layer	4
Units/Sq ft	.25
Sq ft/Unit	4

COLOR OPTIONS



Natural



Portland Plaza Stone

Large-Scale Elegance

Storm Water Management

Portland Plaza (formerly XXL) large-format stones are some of the toughest pavers available in the United States. Designed for heavy traffic areas, such as driveways and village squares, they have a clean, modern look that's sure to add appeal to any large-scale project.

When installed in a permeable application, Portland Plaza is an excellent choice for storm water management.

- Driveway**
- Patio**
- Commercial Projects**



Large Format Stones
Portland Plaza Stone

PRODUCT INFORMATION

Special Order

Pallet wt.	2,950 lbs
Sq ft per pallet	51.6 sq ft
Layers per pallet	5
Sq ft per layer	10.32 sq ft

200 mm x 400 mm

UNIT DIMENSIONS



Height	4 3/4"(120 mm)	Units/Layer	12
Width	7 7/8"(200 mm)	Units/Sq ft	1.16
Length	15 3/4"(400 mm)	Sq ft/Unit	.86
Units/Pallet	60	Unit Wt	48.8 lbs

400 mm x 400 mm

UNIT DIMENSIONS



Height	4 3/4"(120 mm)	Units/Layer	6
Width	15 3/4"(400 mm)	Units/Sq ft	.58
Length	15 3/4"(400 mm)	Sq ft/Unit	1.72
Units/Pallet	30	Unit Wt	96.97 lbs

SPECIAL ORDER ONLY

Several colors are available.
Contact us for details.
Minimum quantities apply.

100 mm x 400 mm

UNIT DIMENSIONS



Height	4 3/4"(120 mm)	Units/Layer	24
Width	3 15/16"(100 mm)	Units/Sq ft	2.24
Length	15 3/4"(400 mm)	Sq ft/Unit	.43
Units/Pallet	120	Unit Wt	24.4 lbs

400 mm x 600 mm

UNIT DIMENSIONS



Height	4 3/4"(120 mm)	Units/Layer	4
Width	15 3/4"(400 mm)	Units/Sq ft	.39
Length	23 5/8"(600 mm)	Sq ft/Unit	2.58
Units/Pallet	20	Unit Wt	145.45 lbs

600 mm x 800 mm

UNIT DIMENSIONS



Height	4 3/4"(120 mm)	Units/Layer	2
Width	23 5/8"(600 mm)	Units/Sq ft	.19
Length	31 1/2"(800 mm)	Sq ft/Unit	5.17
Units/Pallet	10	Unit Wt	290.9 lbs



Becomes permeable when installed according to ICPI specifications for permeable pavements with open-graded base and sub-base for infiltration and storage.

Chamberlain Stone™

NEW

Smooth
Texture

Clean, Modern Look

New for 2024, Chamberlain Stone™ creates contrast and definition for a sleek, modern look. With its clean lines and smooth texture, this three-piece system is perfect for patios, poolscapes, and outdoor entertainment areas.

- ☑ Walkway
- ☑ Patio



Large Format Stones
Chamberlain Stone™

PRODUCT INFORMATION

Pallet wt	3,230 lbs
Sq ft per pallet	114.73 sq ft
Layers per pallet	11
Sq ft per layer	10.43 sq ft

3-Piece System
All three sizes are together on one pallet.

Roller Compactor Recommended

Chamberlain Stone™ is not intended for use in driveways or other vehicular applications.



UNIT DIMENSIONS



Height	2 3/8" (60 mm)
Width	14 3/16" (360 mm)
Length	7 1/16" (180 mm)
Units/Pallet	33
Units/Layer	3
Units/Sq ft	1.44
Sq ft/Unit	.69



Height	2 3/8" (60 mm)
Width	14 3/16" (360 mm)
Length	14 3/16" (360 mm)
Units/Pallet	33
Units/Layer	3
Units/Sq ft	.71
Sq ft/Unit	1.40



Height	2 3/8" (60 mm)
Width	14 3/16" (360 mm)
Length	21 1/4" (540 mm)
Units/Pallet	22
Units/Layer	2
Units/Sq ft	.48
Sq ft/Unit	2.09

COLOR OPTIONS



Granite Blend



Summer Blend



Autumn Blend



Duragreen®

Storm Water Management

Turf Paving System

The open grid design of Duragreen® stones make them the natural choice for projects where erosion control, soil stabilization, and the maintenance of green areas is important. Duragreen® can be used for driveways, boat ramps, shoreline stabilization, and service access lanes. Topsoil and grass or aggregate can be placed in the 3" x 3" grid openings.



Large Format Stones
Duragreen®

PRODUCT INFORMATION

Pallet wt	1,861 lbs
Sq ft per pallet	72.8 sq ft
Layers per pallet	7
Sq ft per layer	10.4 sq ft

Note: Duragreen® Stones are not covered by the Genest Lifetime Warranty.

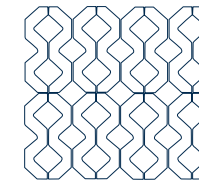


UNIT DIMENSIONS



Height	3 5/8" (90 mm)
Width	15 3/8" (390 mm)
Length	23 3/4" (600 mm)
Units/Pallet	28
Units/Layer	4
Sq ft/Unit	2.56

STACKED BOND



Important:
Install with grooved face up.

COLOR OPTIONS



Natural



Becomes permeable when installed according to ICPI specifications for permeable pavements with open-graded base and sub-base for infiltration and storage.



SQUARE FIRE PIT IN GRANITE BLEND

Outdoor Fire Pits

Natural Stone Texture

Custom Metal Insert

Nothing brings people together like a campfire! Genest Outdoor Fire Pits are easy to set up and come in square or round styles to add a finishing touch to your outdoor living space.

Additional accessory items available!



Square Fire Pit

PRODUCT INFORMATION

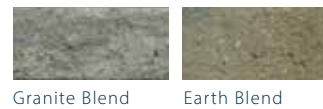
Pallet wt	1,620 lbs
-----------	-----------

Square fire pit comes assembled as a kit on the pallet, including metal insert.
Must be removed from pallet and installed per local fire codes.

FIRE PIT DIMENSIONS

Outside dimensions	49" x 49" x 15"
Inside dimensions	24" x 24"

COLOR OPTIONS



Accessory Items



METAL INSERT
For Genest Round and Square Fire Pits.
Included in fire pit kits or can be purchased separately.



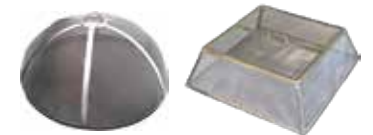
PREMIUM STAINLESS STEEL COOKING GRATE
For Genest Round and Square Fire Pits.
Sold separately.



STEEL LIDS
Keep Weather Out.
Sold separately.



HEAVY GAUGE STEEL COOKING GRATE
For Genest Round and Square Fire Pits.
Sold separately.



STAINLESS STEEL SCREEN
For Genest Round and Square Fire Pits.
Sold separately.



SMOKELESS INSERTS
For Genest Round and Square Fire Pits.
Sold separately.

Round Fire Pit

PRODUCT INFORMATION

Pallet wt	3,300 lbs
-----------	-----------

Layers per pallet 6
Typical round fire pit consists of 48 Genest fire pit blocks and 1 metal insert.

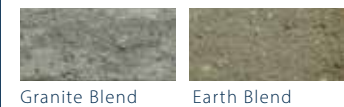
UNIT DIMENSIONS

Height	4" (102 mm)	Units/Pallet	144
Depth	7" (178 mm)	Units/Layer	24
Length	11 1/2" (292 mm)	Unit wt	21 lbs

FIRE PIT DIMENSIONS

Outside diameter	44"
Inside diameter	30"

COLOR OPTIONS



Granite Blend Earth Blend

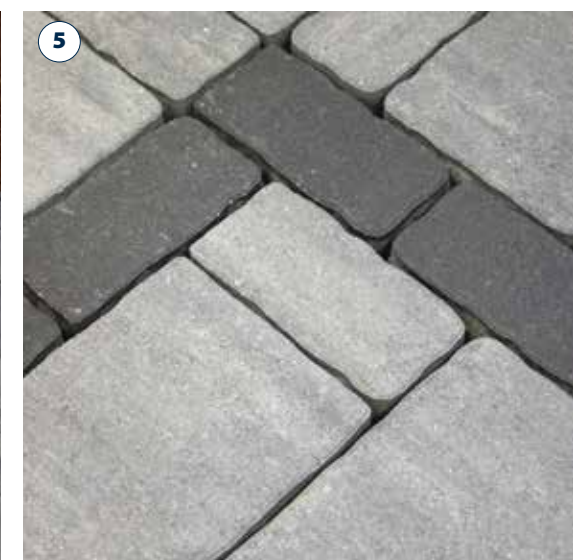
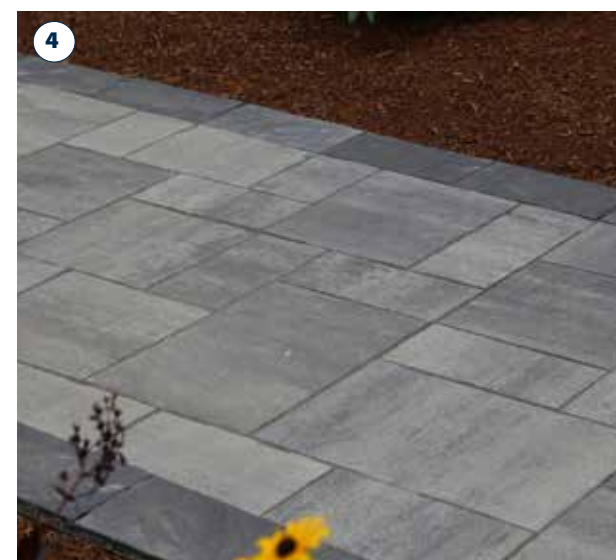
Each Outdoor Fire Pit is sold with a heavy gauge metal insert. It is important to read the Genest Outdoor Fire Pit installation instructions before you build or use the fire pit. Please ask your Genest dealer for a copy of the installation instructions. Consult your local fire department for regulations.

Borders & Accents

Framing a patio, walkway, or driveway can create a stunning visual effect for a distinct landscape design.

Several types of Genest paving stones arranged in various fashions can be incorporated into borders and accents.

- 1** EASTERN BAY STONE® GRANITE BLEND
with Windham Ridge™ Granite Blend
- 2** CAMDEN BAY STONE™ CHARCOAL
with Windham Ridge™ Granite Blend
- 3** HOLLANDSTONE CHARCOAL
with Sebago Granite Blend
- 4** BLACKWATER™ CHARCOAL
with Windham Ridge™ Granite Blend
- 5** EASTERN BAY CHARCOAL
with Grand Katahdin Granite Blend





CB-8 VENEERED WALLS

Comfort Block[®] Masonry Wall Systems

Precision Ground Block Easily Assembled with Masonry Adhesive

The Comfort Block[®] systems are perfect for any project that normally uses standard concrete block for rough construction. Instead of mortar, our precision ground blocks are quickly assembled with glue! The speed of construction with the Comfort Block system is unprecedented. After a Comfort Block wall or feature is constructed, it can be finished with stucco, plaster, or thin veneer. Strapping and siding can also be used. The blocks have a built-in utility channel, so you can easily install electrical boxes after the wall has been constructed.



Multiple Systems Available to Replace Standard CMUs

CB-4 4" thick



CB-4 Stretcher
4"W x 8"H x 16"L



CB-4 Half
4"W x 8"H x 8"L

CB-6 6" thick



CB-6 Stretcher
6"W x 8"H x 12"L



CB-6 Half
6"W x 8"H x 6"L

CB-8 8" thick



CB-8 Stretcher
8"W x 8"H x 16"L



CB-8 Half
8"W x 8"H x 8"L

CB-12 12" thick with optional EPS inserts



CB-12 Stretcher
12"W x 8"H x 12"L



CB-12 Half
12"W x 8"H x 6"L

Accessories

Masonry adhesive and dispenser gun



Precast lintel system for doors & windows



Kangaroo can holder



Mortar leveling kit for base course



CB-8 LANDSCAPE WALL

What makes Comfort Block construction so fast & easy?

- Assembles with adhesive instead of mortar
- Reduces the need for water on the job site
- Storage of mortar and sand on site is eliminated
- Mixing mortar is practically eliminated
- There is little setup or cleanup, so construction can begin more quickly and end later
- Blocks can go immediately from the pallet onto the wall - no stocking required near the mason
- Mason tenders can participate in the wall construction since they are no longer mixing and transporting mortar or stocking blocks
- Basecoat, grout, and finishes can be applied the same day as the wall construction

**OUTDOOR KITCHENS & FIREPLACES • VENEERED LANDSCAPE WALLS
SHEDS • POOL HOUSES/CABANAS • FLOWER BOXES • PILLARS • MORE**



CB-8 OUTDOOR KITCHEN & PIZZA OVEN



CB-8 LANDSCAPE WALL

Landscape Wall Systems



HIGHLAND RETAINING WALL IN EARTH BLEND

Highland Stone® Retaining Wall



Natural Stone Texture

Varied Contours

Create a natural stone appearance with a Highland Stone® Retaining Wall. This 6" wall system combines earth tones, rich textures, varied contours, and all the advantages of the structurally sound rear lip locating system, making it reliable and easy to install.



PRODUCT INFORMATION

Pallet wt	3,045 lbs
Sq ft per pallet	30 sq ft
Layers per pallet	5
Sq ft per layer	6 sq ft
Sets per pallet	20

6" / 12" / 18" Set
All three sizes are together on one pallet.



Height	6" (152 mm)	Units/Layer	4
Depth	12" (305 mm)	Units/Sq ft	4
Length	6" (152 mm)	Sq ft/Unit	.25
Units/Pallet	20	Unit Wt	27 lbs



Height	6" (152 mm)	Units/Layer	4
Depth	12" (305 mm)	Units/Sq ft	2
Length	12" (305 mm)	Sq ft/Unit	.50
Units/Pallet	20	Unit Wt	48 lbs



Height	6" (152 mm)	Units/Layer	4
Depth	12" (305 mm)	Units/Sq ft	1.33
Length	18" (457 mm)	Sq ft/Unit	.75
Units/Pallet	20	Unit Wt	75 lbs

COLOR OPTIONS



Earth Blend



Granite Blend

Highland Stone® Freestanding Wall



Transforms Space with Natural Beauty

Versatile


From courtyards to patios, the multi-piece Highland Stone® Freestanding Wall system is the perfect choice to create a beautiful and natural looking wall. Use it to accent patio designs to turn your outdoor living space into an inviting garden courtyard.




PRODUCT INFORMATION

Pallet wt.	3,395 lbs
Sq ft per pallet	27.6 sq ft
Layers per pallet	4
Sq ft per layer	6.9 sq ft


6" / 12" / 18" Set
All three sizes are together on one pallet.



Height	6" (152 mm)	Units/Layer	5
Depth	9" (229 mm)	Units/Sq ft	4.76
Length	6" (152 mm)	Sq ft/Unit	.21
Units/Pallet	20	Unit Wt	26 lbs



Height	6" (152 mm)	Units/Layer	5
Depth	9" (229 mm)	Units/Sq ft	2.17
Length	12" (305 mm)	Sq ft/Unit	.46
Units/Pallet	20	Unit Wt	54 lbs



Height	6" (152 mm)	Units/Layer	5
Depth	9" (229 mm)	Units/Sq ft	1.4
Length	18" (457 mm)	Sq ft/Unit	.71
Units/Pallet	20	Unit Wt	85 lbs

COLOR OPTIONS



Earth Blend



Granite Blend

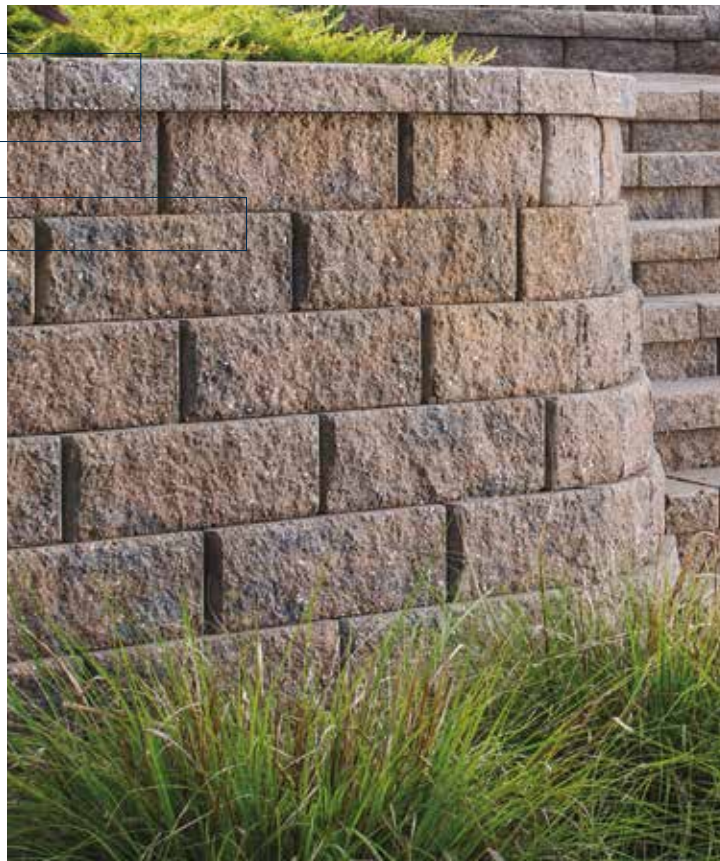
Diamond®



Time-Tested Superior Performance

Natural Beauty

Diamond® retaining walls can give your landscape a new, improved look using the trusted quality of the Anchor® retaining wall system technology. Diamond® is the leading choice for builders and landscape contractors.



PRODUCT INFORMATION

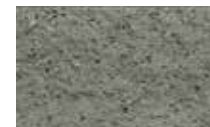
Pallet wt	3,150 lbs
Sq ft per pallet	30 sq ft
Layers per pallet	5
Sq ft per layer	6.5 sq ft

UNIT DIMENSIONS



Height	6" (152 mm)	Units/Layer	9
Depth	12" (305 mm)	Units/Sq ft	1.41
Length	17" (431 mm)	Sq ft/Unit	.70
Units/Pallet	45	Unit Wt	69 lbs

COLOR OPTIONS



Gray



Granite Blend



Earth Blend



Diamond Pro®



Genest Garden Wall Stone®

Landscape Wall Systems
Diamond Pro® & Genest Garden Wall®

**Large Scale
Landscape Projects**

Natural Stone Texture

The proven strength of the Diamond Pro® retaining wall system technology makes this product the perfect choice for larger scale landscaping projects.



**Decorative
Landscape Projects**

Elegant Detail

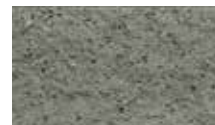
Genest Garden Wall Stone® is a natural-looking, lightweight choice for decorative projects. It is perfect for DIY projects and can be used to build retaining walls, garden planters, and tree rings up to two feet tall.



PRODUCT INFORMATION

Pallet wt	3,837 lbs
Sq ft per pallet	48 sq ft
Layers per pallet	4
Sq ft per layer	12 sq ft

COLOR OPTIONS



Gray

PRODUCT INFORMATION

Pallet wt	3,220 lbs
Sq ft per pallet	46 sq ft
Layers per pallet	6
Sq ft per layer	7.7 sq ft

COLOR OPTIONS



Granite Blend



Earth Blend

UNIT DIMENSIONS



Straight Face			
Height	8" (203 mm)	Units/Layer	12
Depth	12" (305 mm)	Units/Sq ft	1
Length	18" (457 mm)	Sq ft/Unit	1
Units/Pallet	48	Unit Wt	79 lbs

UNIT DIMENSIONS



Height	4" (102 mm)	Units/Layer	24
Depth	7" (178 mm)	Units/Sq ft	3.12
Length	11 1/2" (292 mm)	Sq ft/Unit	.32
Units/Pallet	144	Unit Wt	22 lbs



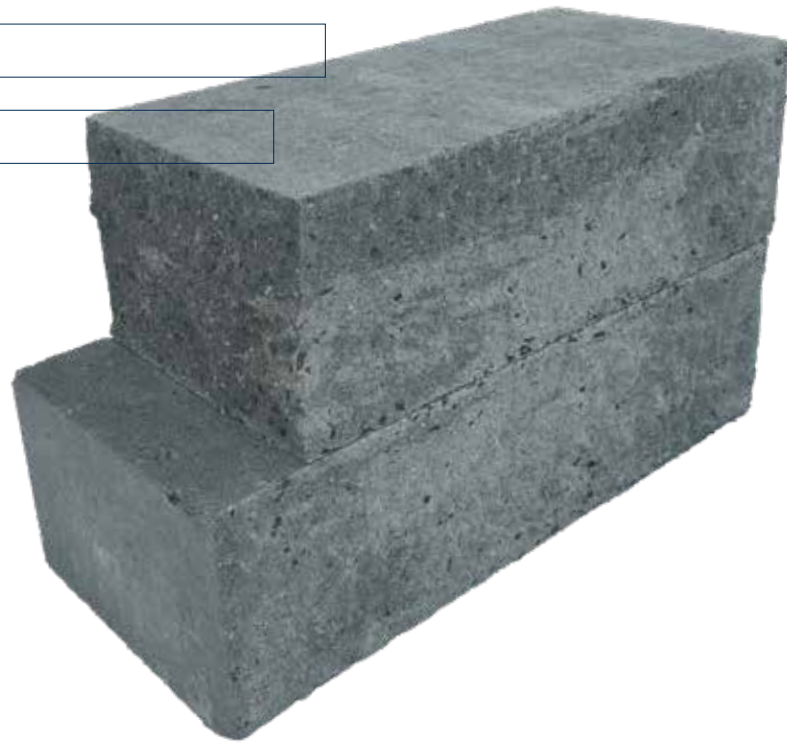
Single-Split Corner Blocks

NEW

Split to Any Length

Unlimited Versatility

Use a block splitter to split these 21" blocks at the 18" indicator marks (located on the back side of the blocks) to create coordinating split-edge corner blocks for Genest Anchor Diamond® retaining walls! Once split, these blocks have two split faces (along one long side and one short side). These extremely versatile blocks can also be split to your own measurements for a variety of applications.



PRODUCT INFORMATION

Pallet wt	2,920 lbs
Layers per pallet	4

UNIT DIMENSIONS



Height	6" (152 mm)	Units/Layer	8
Depth	9" (229 mm)	Units/Pallet	32
Length	21" (533 mm)	Unit Wt	90 lbs

*Block length is 21" unsplit. Installer must split to desired length.

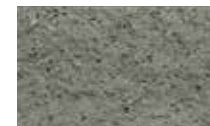
COLOR OPTIONS



Granite Blend



Earth Blend



Gray

NOTE: Block splitters are available to rent from your local Genest store — or, have your blocks pre-split by a Genest associate for an additional fee.



Retaining Wall Accessory Products

Completes Your Landscape Design

Functional Additions

Complete your retaining walls with caps, steps, and corners, each crafted with the same rich textured appearance as our retaining wall and freestanding wall products.

Torpedo® Base Block is a handy addition for quick and easy base installation.



Torpedo® Base Block



Cap Block

PRODUCT INFORMATION

Pallet wt	3,565 lbs
Sq ft per pallet	27 sq ft
Layers per pallet	10
Sq ft per layer	2.7 sq ft
Linear coverage per unit	1.35 linear ft



UNIT DIMENSIONS

Height	3" (76 mm)	Units/Layer	8
Depth	12" (305 mm)	Units/Sq ft	2.9
Length	17"- 15 1/2" (432-394 mm)	Sq ft/Unit	.34
Units/Pallet	80	Unit Wt	44 lbs

Single-Split Corner Block

NEW

PRODUCT INFORMATION

Pallet wt	2,920 lbs
Layers per pallet	4

Blocks are 21" before splitting. installer must split to desired length.



UNIT DIMENSIONS

Height	6" (152 mm)	Units/Layer	8
Depth	9" (229 mm)	Units/Pallet	32
Length	21" (533 mm)	Unit Wt	90 lbs

Step Block

PRODUCT INFORMATION

Pallet wt	4,550 lbs
Sq ft per pallet	33 sq ft
Layers per pallet	5
Sq ft per layer	6.6 sq ft



UNIT DIMENSIONS

Height	6" (152 mm)	Units/Layer 10
Depth	12" (305 mm)	Units/Sq ft 1.51
Length	16" (406 mm)	Sq ft/Unit .66
Units/Pallet	50	Unit Wt 90 lbs

Pro Corner Block 8"

PRODUCT INFORMATION

Pallet wt	3,200 lbs
Sq ft per pallet	30 sq ft
Layers per pallet	3
Sq ft per layer	10 sq ft



UNIT DIMENSIONS

Height	8" (203 mm)	Units/Layer 10
Depth	9" (229 mm)	Units/Sq ft 1
Length	18" (457 mm)	Sq ft/Unit 1
Units/Pallet	30	Unit Wt 105 lbs

ONLY AVAILABLE IN: Gray

Torpedo® Base Block



PRODUCT INFORMATION

Pallet wt	3,190 lbs
Linear ft per pallet	83 lin ft
Layers per pallet	8
Linear coverage per unit	1.31 lin ft



Color: Natural

UNIT DIMENSIONS

Height	4" (102 mm)	Units/Layer 8
Depth	11" (280 mm)	Units/Lin ft 1.31
Length	15 3/4" (400 mm)	Unit Wt 49 lbs
Units/Pallet	64	

Color Options



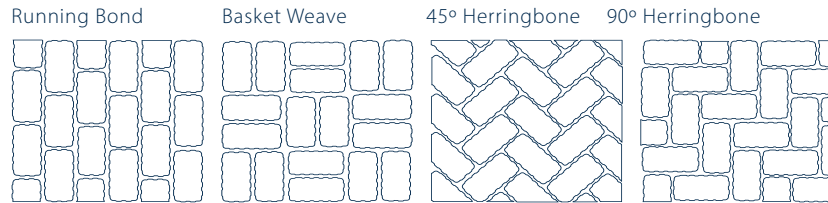
Gray Granite Blend Earth Blend

Color options for all Retaining Wall Accessory Blocks except for the Torpedo® Base Block.

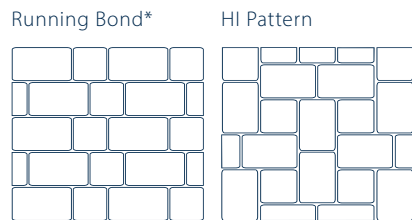
Paving Stones Laying Style Ideas

NOTE: Our multi-piece pavers are intended to be installed randomly.

19 EASTERN BAY STONE



23 CAMDEN BAY HI PACK

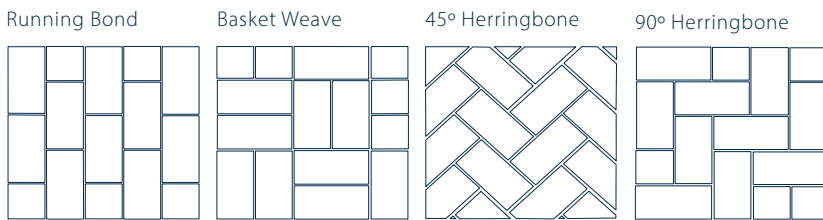


*Ratio of rectangular to square pavers (71% rectangles and 29% squares) should be considered when planning running bond pattern to avoid running out of squares.

25 HARBORLINE BRICK

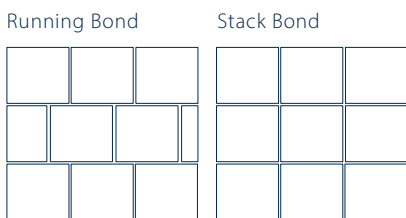
27 HOLLANDSTONE

29 STORMWATER BRICK



39 JORDAN BAY FLAGGING

41 LEXINGTON



Note: Pick from multiple pallets to ensure proper blending when installing pavers.



15 CIRCLE PACK

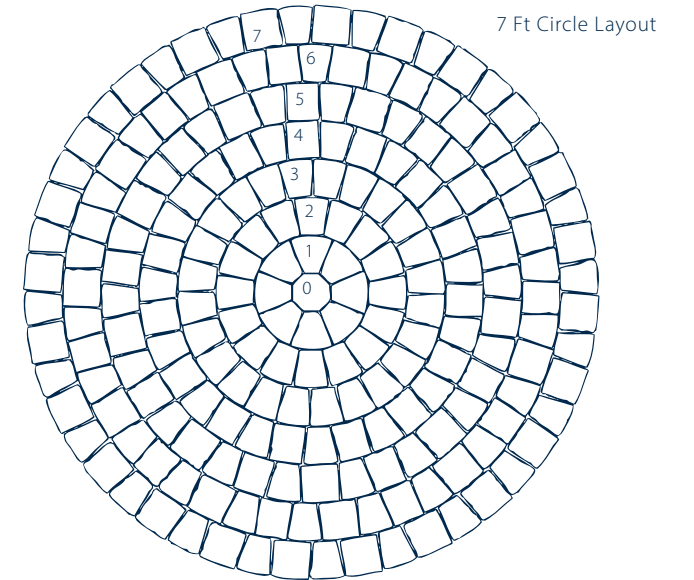
STARTING FROM THE CENTER:

7' CIRCLE

- Center: 1 center piece
- Ring 1: 8 large wedges
- Ring 2: 16 small wedges
- Ring 3: 24 small wedges
- Ring 4: 15 small wedges & 15 rectangles
- Ring 5: 18 small wedges, 9 rectangles & 9 squares
- Ring 6: 21 small wedges, 11 rectangles & 12 squares
- Ring 7: 24 small wedges, 24 squares & 1 rectangle

9' 10" CIRCLE

- Ring 8: 29 small wedges, 15 squares & 14 rectangles
- Ring 9: 32 small wedges, 17 squares & 16 rectangles
- Ring 10: 35 small wedges, 25 squares & 11 rectangles



7 Ft Circle Layout



- One pallet will produce two 7' circles or one 9' 10" circle. Four layers per 7' circle.
- No cutting is needed with the above directions, but you must allow some spacing between paving stones.
- Spare paving stones are included in each pallet

Genest Paving Stone & Walls

Transferable Lifetime Warranty

Genest is pleased to offer a transferable lifetime warranty on the structural integrity of our paving stones and landscape retaining walls for residential use.

This warranty protects against structural failure of our paving stones and retaining walls under normal conditions, including exposure to de-icing salts. We certify that our paving stones conform to the most current specification standards by the Interlocking Concrete Pavement Institute (ICPI) and ASTM Standard Specifications for Concrete Unit Pavers. We certify that our landscape retaining walls conform to the most current specification standards by the National Concrete Masonry Association (NCMA) and the ASTM Standard Specifications for Segmental Retaining Walls.

If our pavers or retaining walls prove to be structurally defective, we will replace the product. Replacement labor is not included, and no guarantee of color matching can be made.

This warranty goes into effect on the date of purchase and is transferable with property ownership. Proof of purchase required and certain limitations and exclusions apply.

Review and download the complete warranty with its limitations and exclusions. Please visit www.genestconcrete.com or call our sales department at 1-800-649-4773 or ask a sales representative to see a copy.

*Efflorescence is a naturally occurring characteristic of concrete and not covered by the lifetime warranty.

Genest manufactures retaining walls under license from Anchor Wall Systems, Inc.



Engineering of a Genest Paving Stone

Strength Meets Beauty

In 1986, Genest began producing paving stones with the use of German technology. This manufacturing process is called "Face Mix," and the majority of paver production in Europe now uses this approach.

Our method starts with a "base mix" comprised of high-strength concrete and a significant concentration of stone, most of which is granite. This combination creates the signature strength and durability of a Genest paving stone. Next, we blend carefully selected fine aggregate, a high concentration of cement, and color pigment to produce the "face mix". This results in a more brilliant color blend and a solid surface with no visible signs of stone.

During this process, the "base mix" is placed into the mold and compacted. Once the base is compacted, the "face mix" is immediately added and compressed together as a composite whole. Once installed, these paving stones will withstand severe New England weather conditions and continue performing as designed for years to come.

GENEST PAVING STONES & WALLS

- Structural Integrity
- Durability
- Salt Resistance
- Limited Lifetime Warranty
- Smooth Architectural Finish
- Brilliant Colors
- Exceeds Industry Standards

Duracon® Finish

